

Volker Lenzner

The new Lift Directive 2014/33/EU and the amendments to the standards of the EN 81 standard family have caused considerable expense for adjusting products among manufacturers as well as among installation companies. Many points had to be taken into account in this regard in the planning phase and project preparation in order to be able to comply with the transition periods. This challenge is now history, since after 01.09.2017 new lifts can only be distributed based on EN 81-20/-50.



Figure 1: Lift component brochure

At the national level, the requirements on lifts with regard to inspection, operating in line with the state of the art and as a result also for modernisation have been changed by the Operational Safety Ordinance.

LiftEquip's successful operation used to involve for the most part components for drive technology, safety components and modernisation solutions. The component catalog shows you the wide product range.

As a result of the changed parameters produced principally by EN 81-20/-50, the manufacturer determined that the market is increasingly interested in integrated solutions. On the one hand, these are applications for modernisation; here LiftEquip markets classic drive systems with matching inverter and machine frame. These components can be delivered at short notice from stock for standard applications.

Modernisation

The modernisation package LEMoS for lifts with an existing machine-room represents a very interesting system solution. LEMoS is a highly flexible concept in which components such as shaft equipment can be reused and drive, lift car, doors and control exchanged, either simultaneously or as part of a classic step-by-step modernisation, depending on what is needed and the budget. At the same time, the machine-room is preserved, which can be an interesting alternative for the operator and maintenance companies to complete replacement with an MRL system.

New lifts

The conversion in standards has also raised the demands on new lifts. Apart

from reduced protective room, variable and compact shaft dimensions, many installation companies are on the look for complete solutions, if possible from one source, to ensure that the challenges of the interfaces between the components of several suppliers are simplified and the complexity in their own companies is reduced. This is undoubtedly also due to the good order books and strong ongoing construction activity.

The Esslinger company has faced up to the demands of the market and is now offering building kits and complete systems apart from high quality components. Within the LEA family, all lift systems are available as mechanical building kit with defined and documented interfaces to the electrical components. All kinds of LEA projects have already been successfully realised and important experience gathered with many control manufacturers on the market.

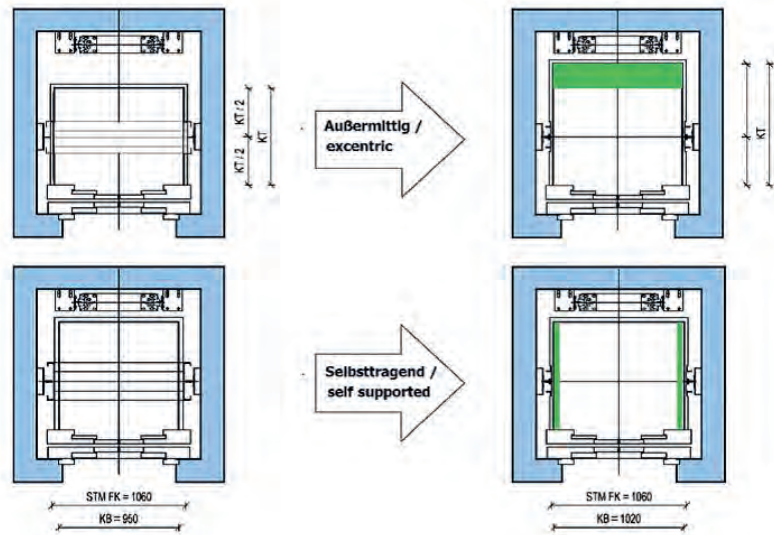
In the system brochure of the LEA family, a wide product range is offered from the standard MRL lift, the building kit solutions for lifts with machine-room and cargo lifts to the home lift according to the Machinery Directive.

Type-tested complete system LEA Comfort with Kollmorgen MPK 411 control

LiftEquip has gone a step further and in addition has the LEA Comfort as type-tested complete system with the Kollmorgen multifunctional MPK 411



Figures 2, 3 and 4: MO61 S with PMC 145, converter MFR, TW 130



Figures 5 and 6: LEMoS – lift car and planning

This is provided both for the mechanical construction kit as well as for the type-tested complete system. As a result, the customer can not only install efficiently and effectively, but also according to the highest safety standards. An assembly frame with all the associated expense is not needed. The

assembly box required for frameless assembly is provided on loan. It includes all the tools and hoisting equipment needed, always checked and adjusted to the particular lift system. The assembly box is delivered directly to the building site and collected later. It could not be simpler!



Figure 7: LEA family brochure

control in its product range, which depending on requirements can be adjusted within the very broadly framed type test examination and covers the complete performance range of the LEA Comfort. As a result, the customer gets everything from one source and perfectly coordinated with each other.

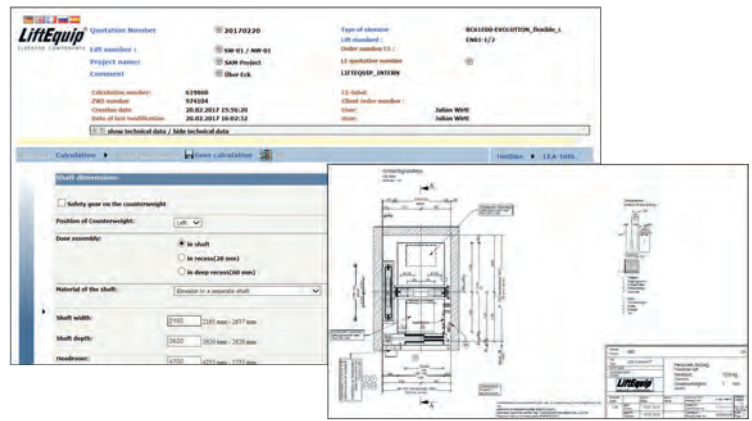
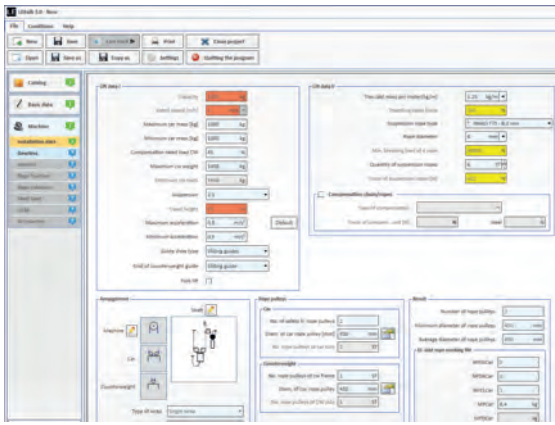
Certified frameless assembly concept including assembly courses and assembly tools

The Esslingen-based manufacturer sees itself as a complete provider and this also includes support after delivering the goods. This is why a TÜV-certified frameless assembly concept is available for the LEA Standard and LEA Comfort.

LEA® - Family	
Standard	<p>At home in the standard range The economical and space-efficient solution for medium travel heights in the standard range. Reduced safety spaces available.</p> <p>Type: MRL Rated Load: 450 – 1.000 kg Travel height: 40 m Speed: 1.0 m/s</p>
Flexible	<p>Variable and functional Flexible dimensions for medium travel heights. Available with many equipment variants.</p> <p>Type: MRL Rated Load: 450 – 1.000 kg Travel height: 40 m Speed: 1.0 m/s</p>
Comfort	<p>The all-rounder Superior technology for exacting requirements and more heavily frequented buildings.</p> <p>Type: MRL Rated Load: 450 – 4.000 kg Travel height: 100 m Speed: up to 2.5 m/s</p>
Comfort Plus	<p>A classic Tried-and-tested elevator system with machine room and with geared or gearless drive.</p> <p>Type: MR Rated Load: 450 – 2.500 kg Travel height: 100 m Speed: up to 2.5 m/s</p>
Cargo	<p>Robust and reliable Sturdy freight elevator with machine room and with geared or gearless drive.</p> <p>Type: MR Rated Load: from 1.800 kg Speed: up to 1.0 m/s</p>
Home	<p>Personal and individual The Gulliver and Orion home lift: in accordance with 2006/42/EC, up to 5 landings, over 70 platform variants and design options.</p> <p>Travel height: 15 m Speed: 0,15 m/s</p>



Figures 8 and 9: LEA Family and LEA Comfort



Figures 10 and 11: LEKalk 3.0 and LEA configurator tools

It is possible to attend courses on the correct use of the assembly tools and assembly sequence in which practical application is demonstrated in special training shafts. The course is conducted by qualified trainers.

Tools and documentation for components and systems

Products are only as good as the tools you can use to configure them.

LEKalk 3.0

LiftEquip has recently made LEKalk 3.0 available for drive design and component selection. This further developed version makes it even easier to create an offer tailored to the project yourself and carry out the calculations needed for the documentation, including the UCM proof. In addition, the customer is given the opportunity to design according to EN 81-20/50 or EN 81-1 if this is required for evaluating an existing project.

LEA family configurator

A new online configurator is available for LEA family systems with which the

35 Years LiftEquip Elevator Components

COMPONENTS
Komponenten

MODERNISATION
Modernisierung

NEW INSTALLATIONS
Neuanlagen

HOME LIFTS
Home Lifts

LiftEquip®
ELEVATOR COMPONENTS



Figure 12: 35 years of LiftEquip experience

lift system suitable is selected and the lift planned and configured. The customer receives as result an offer and in addition a complete lift drawing in pdf and dwg format together with the technical features required, such as electrical connection lines and loads. All quick and uncomplicated.

Every technical document, such as operating and assembly instructions,

CAD files and product catalogues, is available in an area of the homepage for download after registration.

interlift 2017

At the interlift 2017, LiftEquip will be presenting everything new related to the LEA family and its components at its customary place in Hall 1 Stand 1110.